

### FEATURES

- HCMOS/TTL logic compatible
- Wide frequency range
- Low power consumption
- Resistance weld package

### 8 PIN DIP CLOCK OSCILLATOR

The HTHSC Series clock oscillator offers low current drain and is compatible with HCMOS/TTL logic. The metal package with pin #4 case ground acts as a shielding to minimize radiation.

### PART NUMBERING GUIDE "EXAMPLE"

PART NUMBER *	FREQUENCY STABILITY
HTHSC2	±100 PPM
HTHSC1	±50 PPM
HTHSC0	±25 PPM

\* Complete part number to include frequency. i.e. HTHSC2-10.000MHz

### OPERATING CONDITIONS/ELECTRICAL CHARACTERISTICS

PARAMETERS	FREQUENCY RANGE	CONDITIONS	MINIMUM	TYPICAL	MAXIMUM	UNITS
FREQUENCY RANGE ( $f_0$ )	1.000 ~ 150.000		1.000		150.000	MHz
OPERATING TEMP. RANGE ( $T_{OPR}$ )	1.000 ~ 150.000		0		+70	°C
STORAGE TEMP. RANGE ( $T_{STG}$ )	1.000 ~ 150.000		-55		+125	°C
FREQUENCY STABILITY	1.000 ~ 150.000	All conditions*	-100		+100	PPM
INPUT CURRENT ( $I_{DD}$ )	1.000 ~ 25.000			17	25	mA
	25.000 ~ 50.000			33	46	mA
	50.000 ~ 80.000			45	77	mA
	80.000 ~ 150.000			67	82	mA
OUTPUT SYMMETRY	1.000 ~ 150.000	50% $V_{DD}$ level	40	50 ±3	60	%
RISE TIME ( $T_R$ )	1.000 ~ 150.000	10% ~ 90% $V_{DD}$ level			5	nS
FALL TIME ( $T_F$ )	1.000 ~ 150.000	90% ~ 10% $V_{DD}$ level			5	nS
OUTPUT VOLTAGE ( $V_{OL}$ , $V_{OH}$ )	1.000 ~ 150.000	$I_{OL} = 16$ mA			0.5	V
		$I_{OH} = -16$ mA	4.5			V
OUTPUT CURRENT ( $I_{OL}$ , $I_{OH}$ )	1.000 ~ 100.000	$V_{OL} = 0.5$ V			16	mA
		$V_{OH} = 4.5$ V			-16	mA
OUTPUT LOAD	1.000 ~ 150.000	TTL			10	TTL
		HCMOS			15	pF
START-UP TIME ( $T_S$ )	1.000 ~ 150.000	0.0V TO 5.0V			10	mS
SUPPLY VOLTAGE ( $V_{DC}$ )		+5.0 ±0.25				V <sub>DC</sub>

\* Inclusive of 25°C tolerance, operating temperature range, input voltage change, load change, aging, shock and vibration.

### PACKAGE DIMENSIONS (mm)

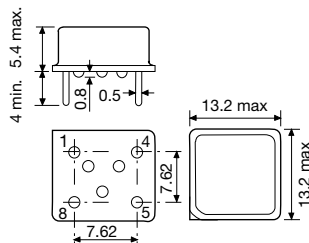


Figure 1) HTHSC Series – Side, Bottom and Top views

### PIN CONNECTIONS

#1	NC
#4	GROUND
#5	OUTPUT
#8	+5V DC

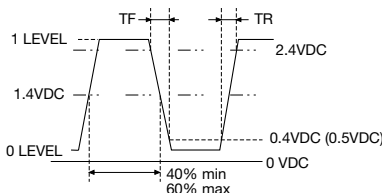


Figure 2) TTL Output Wave Form

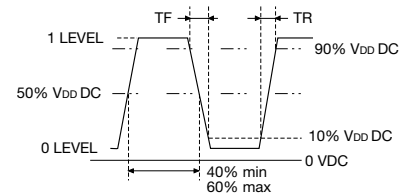


Figure 3) HCMOS Output Wave Form